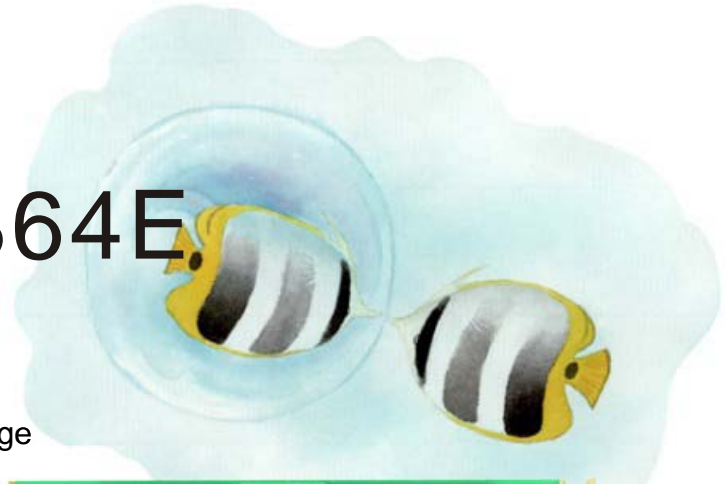


BG12864E



Feature

1. COB with metal frame
2. Built-in controller KS0107/0108
3. +5V single power supply, with built-in negative voltage
4. 1/64 duty cycle
5. LED B/L pins: 19/20, or A/K, or 1/2
6. Option: LED edge B/L, EL B/L
7. Option: +3V single power supply
8. Option: External negative voltage



Mechanical Data

Item	Standard Value	Unit
Module Dimension	75.0 x 52.7	mm
Viewing Area	60.0 x 32.6	mm
Dot Size	0.39 x 0.39	mm
Dot Pitch	0.43 x 0.43	mm

Pin Assignment

Pin	Symbol	Function
1	Vdd	Power supply (+5V)
2	GND	Power supply(GND)
3	Vo	Contrast adjustment
4~11	DB0~7	Data bus line
12	/CS1	Chip select IC1
13	/CS2	Chip select IC2
14	/RST	Reset signal
15	R/W	Data read/write
16	D/I	Data / instruction
17	E	Enable signal
18	Vee	Negative voltage output
19	A	Power supply for B/L (+)
20	K	Power supply for B/L (GND)

Electronic Characteristics

Item	Symbol	Condition	Typical Value	Unit
Input Voltage	Vdd	Vdd = +5V	5.0	V
Supply Current	Idd	Vdd = +5V	6.0	mA
LCD Driving Voltage	Vdd-Vo	25°C	8.5	V
LED Forward Voltage	Vf	25°C	3.9	V
LED Forward Current	If	25°C	70	mA
EL Power Voltage	Vel	Vel=110Vac/400Hz		V

Dimension

